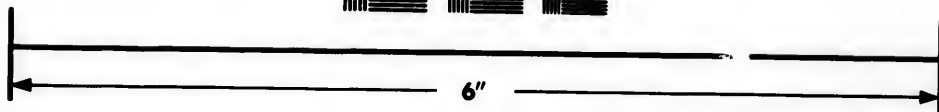
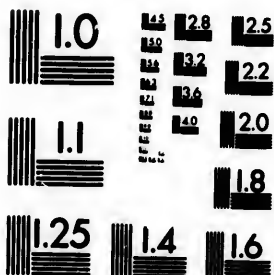


**IMAGE EVALUATION  
TEST TARGET (MT-3)**



**Photographic  
Sciences  
Corporation**

23 WEST MAIN STREET  
WEBSTER, N.Y. 14580  
(716) 872-4503

**CIHM/ICMH  
Microfiche  
Series.**

**CIHM/ICMH  
Collection de  
microfiches.**



**Canadian Institute for Historical Microreproductions / Institut canadien de microreproductions historiques**

**© 1983**



The copy filmed here has been reproduced thanks to the generosity of:

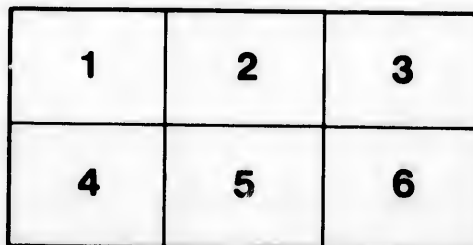
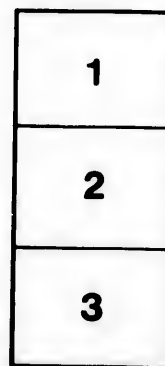
Library Division  
Provincial Archives of British Columbia

The images appearing here are the best quality possible considering the condition and legibility of the original copy and in keeping with the filming contract specifications.

Original copies in printed paper covers are filmed beginning with the front cover and ending on the last page with a printed or illustrated impression, or the back cover when appropriate. All other original copies are filmed beginning on the first page with a printed or illustrated impression, and ending on the last page with a printed or illustrated impression.

The last recorded frame on each microfiche shall contain the symbol → (meaning "CONTINUED"), or the symbol ∇ (meaning "END"), whichever applies.

Maps, plates, charts, etc., may be filmed at different reduction ratios. Those too large to be entirely included in one exposure are filmed beginning in the upper left hand corner, left to right and top to bottom, as many frames as required. The following diagrams illustrate the method:



L'exemplaire filmé fut reproduit grâce à la générosité de:

Library Division  
Provincial Archives of British Columbia

Les images suivantes ont été reproduites avec le plus grand soin, compte tenu de la condition et de la netteté de l'exemplaire filmé, et en conformité avec les conditions du contrat de filmage.

Les exemplaires originaux dont la couverture en papier est imprimée sont filmés en commençant par le premier plat et en terminant soit par la dernière page qui comporte une empreinte d'impression ou d'illustration, soit par le second plat, selon le cas. Tous les autres exemplaires originaux sont filmés en commençant par la première page qui comporte une empreinte d'impression ou d'illustration et en terminant par la dernière page qui comporte une telle empreinte.

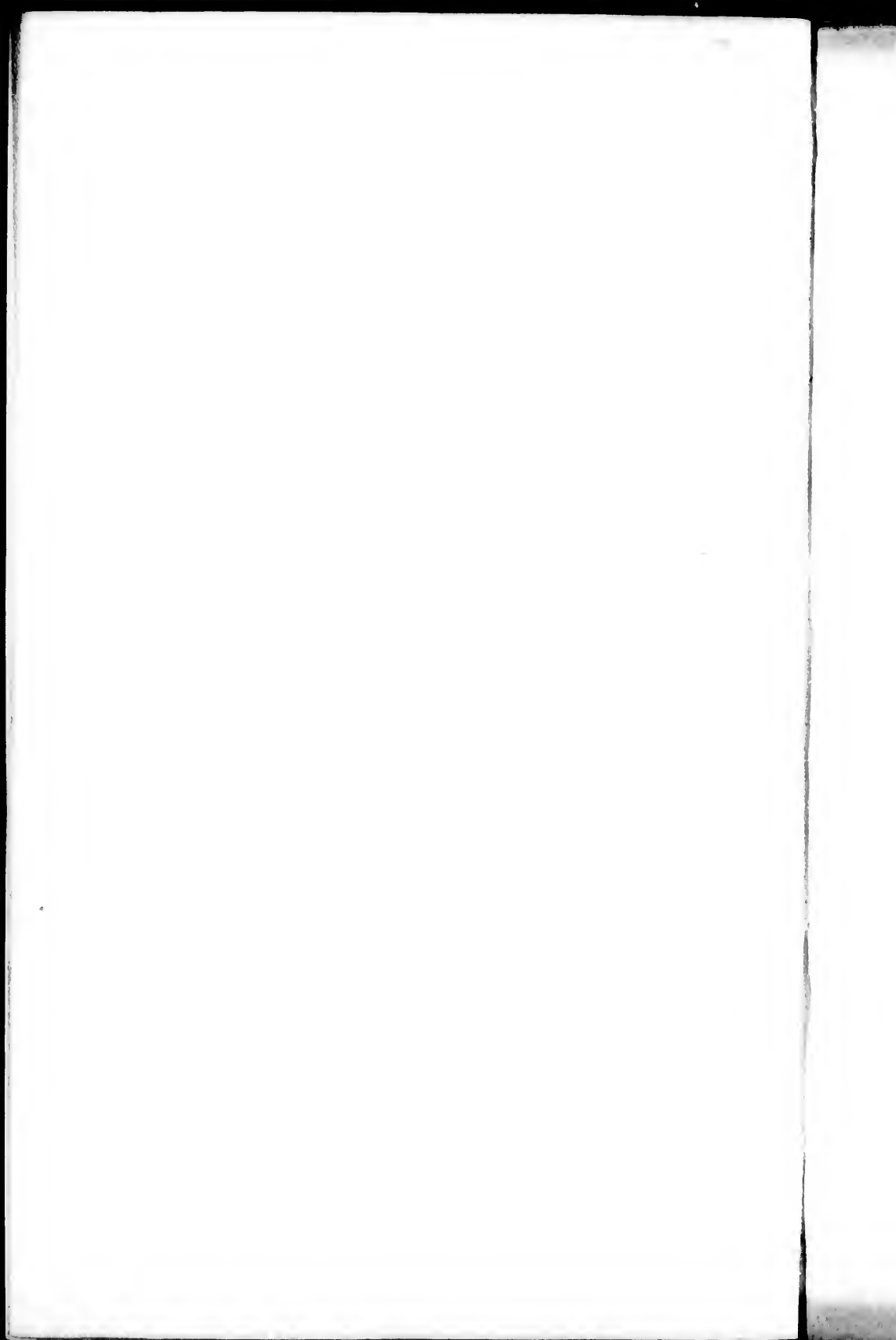
Un des symboles suivants apparaîtra sur la dernière image de chaque microfiche, selon le cas: le symbole → signifie "A SUIVRE", le symbole ∇ signifie "FIN".

Les cartes, planches, tableaux, etc., peuvent être filmés à des taux de réduction différents. Lorsque le document est trop grand pour être reproduit en un seul cliché, il est filmé à partir de l'angle supérieur gauche, de gauche à droite, et de haut en bas, en prenant le nombre d'images nécessaire. Les diagrammes suivants illustrent la méthode.

ails  
du  
odifier  
une  
mage

rrata  
o

elure,  
n à



# PLATES

TO

*ALEXANDER DE HUMBOLDT'S*

POLITICAL ESSAY

ON

THE KINGDOM

OF

# NEW SPAIN.

---

LONDON.

PRINTED FOR LONGMAN, HURST, REES, ORME, AND BROWN; AND  
H. COLBURN: AND W. BLACKWOOD, AND BROWN AND CROMBIE,  
EDINBURGH.

1811.

760

9727

H919P

v.5

T. Davison, Lombard street,  
Whitefriars, London.

CONTENTS.

1. *Peak of Orizaba.*
2. *Volcanos of La Puebla.*
3. *Plan of the Port of Acapulco.*
4. *Map of the Valley of Mexico.*
5. *Plan of the Port of Veracruz.*
6. *Section of the Western Declivity of the Table-land  
of New Spain.*
7. *Ditto, Eastern Declivity, ditto.*
8. *Ditto, Central Table, ditto.*
9. *Map of New Spain.*



1875

1908  
1909  
1910  
1911  
1912  
1913  
1914  
1915  
1916  
1917  
1918  
1919  
1920  
1921  
1922  
1923  
1924  
1925  
1926  
1927  
1928  
1929  
1930  
1931  
1932  
1933  
1934  
1935  
1936  
1937  
1938  
1939  
1940  
1941  
1942  
1943  
1944  
1945  
1946  
1947  
1948  
1949  
1950  
1951  
1952  
1953  
1954  
1955  
1956  
1957  
1958  
1959  
1960  
1961  
1962  
1963  
1964  
1965  
1966  
1967  
1968  
1969  
1970  
1971  
1972  
1973  
1974  
1975  
1976  
1977  
1978  
1979  
1980  
1981  
1982  
1983  
1984  
1985  
1986  
1987  
1988  
1989  
1990  
1991  
1992  
1993  
1994  
1995  
1996  
1997  
1998  
1999  
2000  
2001  
2002  
2003  
2004  
2005  
2006  
2007  
2008  
2009  
2010  
2011  
2012  
2013  
2014  
2015  
2016  
2017  
2018  
2019  
2020  
2021  
2022  
2023  
2024  
2025



1. *Index of the American Historical Association, 1900-1901*

*1. Underfoot in Longman Pass? West of New York - 1922*

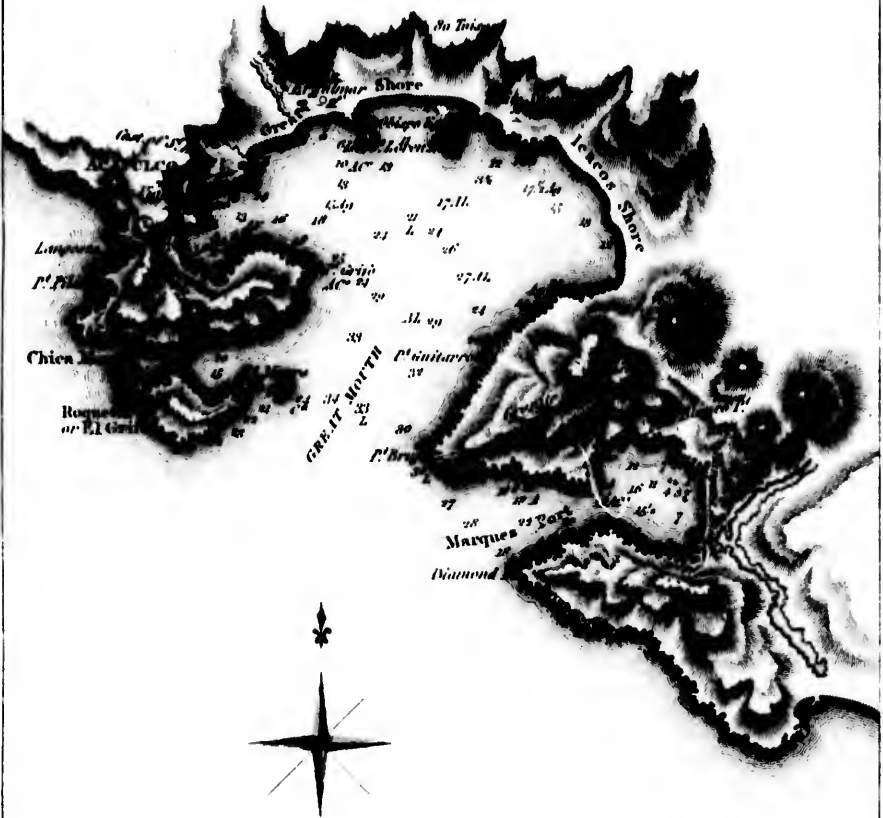


L  
L  
M  
M  
i

L  
P  
C

Latitude of Acapulco 16° 50'. 29" N.  
 Longitude West from Paris in time 67° 48'. 24  
 Mean Temperature 27°. 4". Centigrade  
 Inclination of the Magnetic Needle  
 in March 1863 new division ) 48°. 2'. 0  
 Intensity of the Magnetic force  
 (expressed by 240 oscillations when under  
 the Magnetic Equator) 211. m. 10. of time.  
 Humbolt.

- A. Arena / fine Sand  
 P. Pedra / Rocky bottom  
 Al. Arena y lama / sand and Mud  
 La. Arena gruesa / Gravel  
 L. Lama / Mud  
 C. Conchuela / Shells  
 AF. Arena y Fango / Sand and Slur  
 AI. Arena y Guayfo / Sand and Gravel  
 The Figures denote Fathoms.



**PLAY**  
 of the  
**PORT**  
 of  
**ACAPULCO.**

Scale of 2 Maritime Miles or 4000 Toises



The Rio  
the Rio  
was to

Eastern P  
of the

Ex

th C  
th T  
th M  
th A  
th I  
th R

# MAP

*Of the Valley of Mexico.*

*And Neighbouring Mountains*

*and on the Spot in 1801, by Don Louis Martin.*

*Now modelled and corrected in 1807*

*in the Trigonometrical operations of*

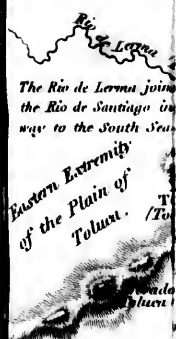
*Don Joaquín Velasquez.*

*the Astronomical observations, and Barometrical measurements of W. de Humboldt.*

**By JABBO OLTMANN'S.**

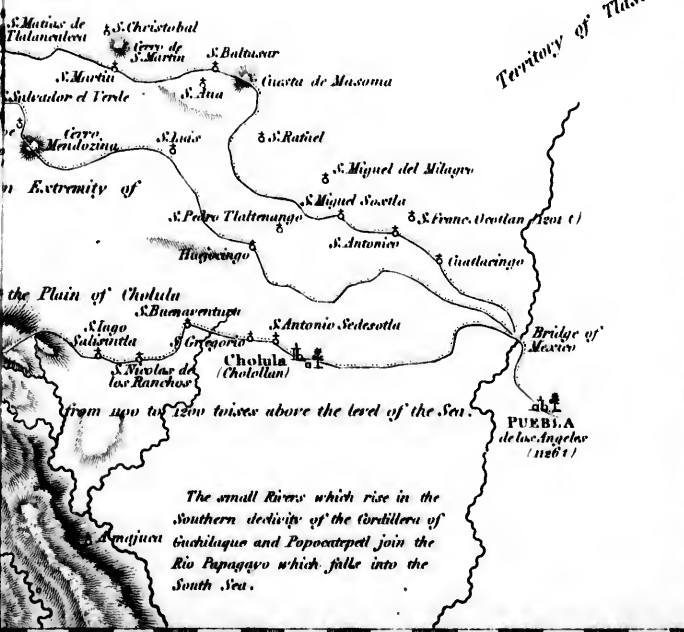


*... of Huachucoana conducts the waters of the Rio de Guautitlan by the Rio de Tula  
... canals and the Rio de Barroco to the Atlantic Ocean. - The canals of Zumpango  
... San Christobal (B.F.C) were added in 1796 & 1798. - The small canal of Vertiderra  
... was to throw the Dosague dry. - The canals (A.B) were projected to remove the  
... which the City of Mexico is still exposed of inundations from the South and East.  
Humboldt.*



*The Rio de Lerma joins the Rio de Santiago in its way to the South Sea.*

*Eastern Extremity of the Plain of Toluca.*  
*Western Extremity of the Plain of Toluca.*



**Explanation**

- ♣ CAPITAL or
  - ♠ Town.
  - ⊙ Village.
  - ☉ Astron. observ.
  - ☿
  - ♁ Result of a Tr.
- (The number indicates the height above the level of the Sea.)*

*the Plain of Cholula*  
*from up to 1200 toises above the level of the Sea.*

*The small Rivers which rise in the Southern declivity of the Cordillera of Guachilique and Popocatepetl join the Rio Papagayo which falls into the South Sea.*

*Part of the Territory of Tlaxcala.*





The Rio de Lerma joins the Rio de Santiago in its way to the South Sea.

Eastern Extremity of the Plain of Toluca.

TOLUCA (Toluca) (1379)

**Explanation of Signs.**

- Ⓐ CAPITAL or great CITY.
- Ⓜ Town.
- Ⓝ Village.
- ☉ Astron. observ. of Long. & Lat.
- ☽ " " of Lat.
- ☿ " " of Long.
- Δ Result of a Trigonom. Oper.<sup>n</sup>  
(The number of wisas indicates the elevation above the level of the Sea.)

101°

00'

10'

20'

30'

# MAP

## Of the Valley of Mexico.

And Neighbouring Mountains  
Sketch'd on the Spot in 1801, by Don Louis Martin,  
and New modelled and corrected in 1807  
from the Trigonometrical operations of  
Don Joaquin Velasquez,  
(and the Astronomical observations, and Barometrical  
measurements of W. de Humboldt.

By JABBO OLTMANN'S.

The Canal of Huachuacan conducts the waters of the Rio de Guantitlan by the Rio de Tula  
or Motecuma and the Rio de Pannos to the Atlantic Ocean. - The Canals of Zunpango  
(D.F.) and San Christobal (B.F.C) were added in 1796 & 1798. - The small Canal of Vertidiers  
(D.E) serves to throw the Dosague dry. - The canals (A.B) were projected to remove the  
danger to which the City of Mexico is still expos'd of inundations from the South and East.  
Humboldt.



Part of the  
Territory of Tlaxcala.

Western Extremity of

the Plain of Cholula

from up to 1200 toise above the level of the Sea.

The small rivers which rise in the  
Southern declivity of the cordillera of  
Guchilaque and Popocatepetl join the  
Rio Papagayo which falls into the  
South Sea.

101°

00'

10'

20'

30'

P.

Vera C  
Nor  
Par  
of  
The  
ter  
ort  
ty  
one  
i to  
The

pt. G



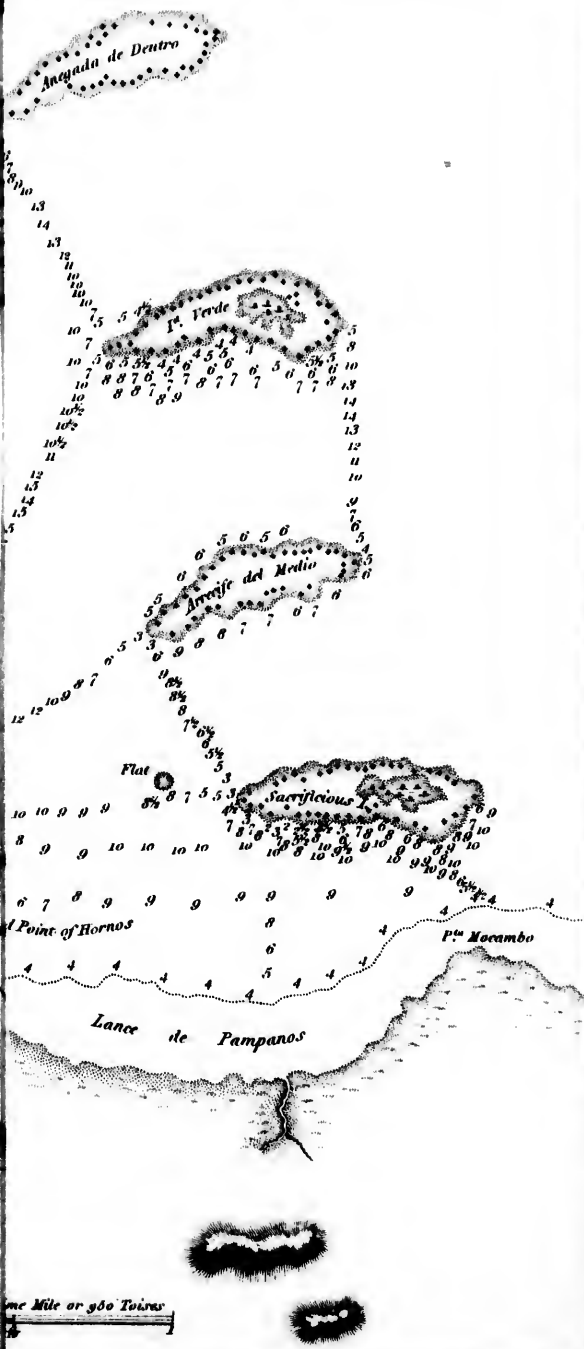
# PLAN

# VERE

Ciudad de Perote

P<sup>ta</sup> Delgada N. O. N. N. corr.  
distant 7 Leguas

Vera Cruz / the most nor  
North Lat. and 0° 33'  
Paris). - Mean Temper  
of Febru. - Annual  
The north Wind is an  
ter. During this Wind  
ordinary variations  
ry tides do not cover  
one tide in the 24 ho  
1 to 1½ feet, but from  
The figures indicate

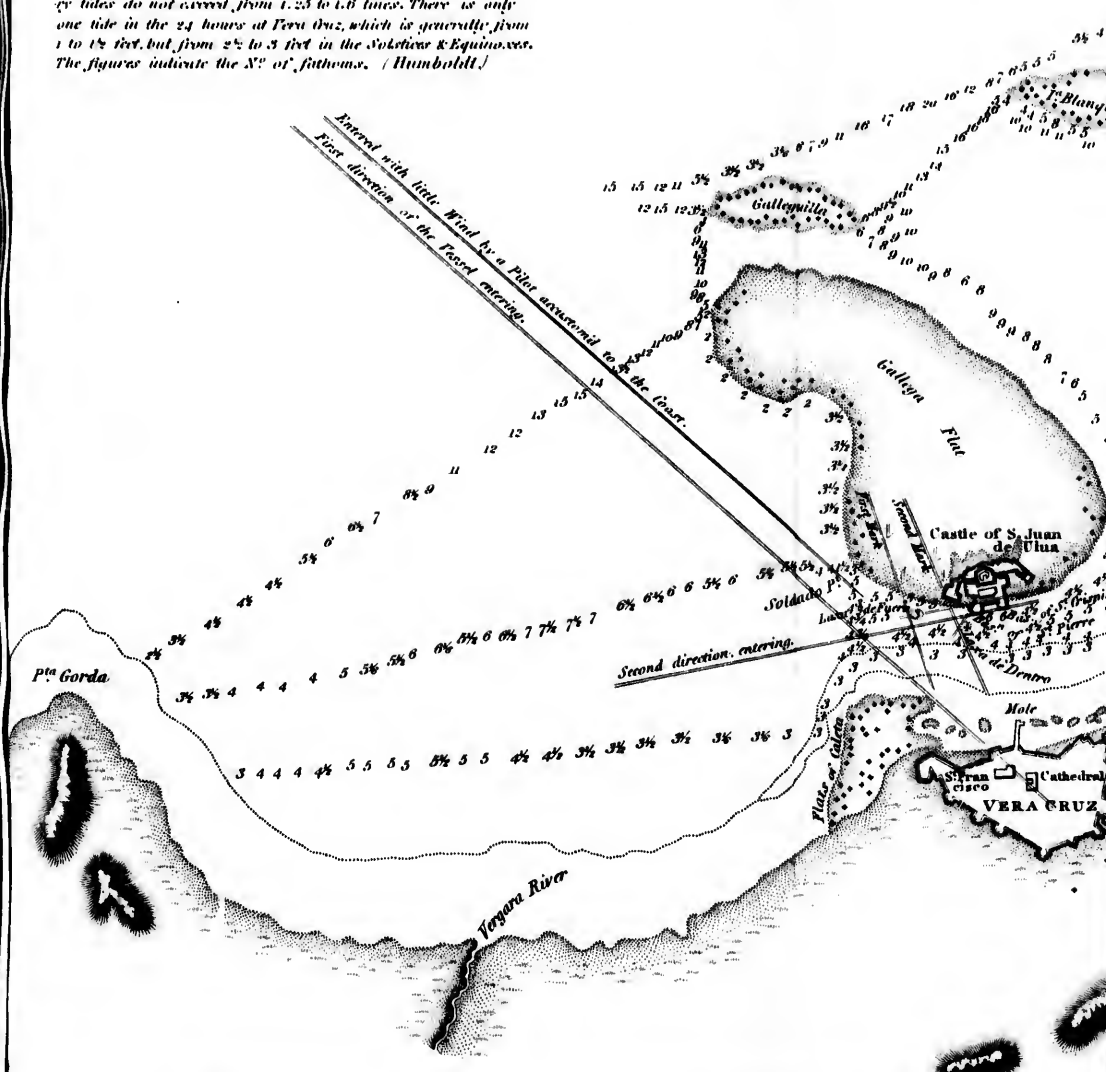


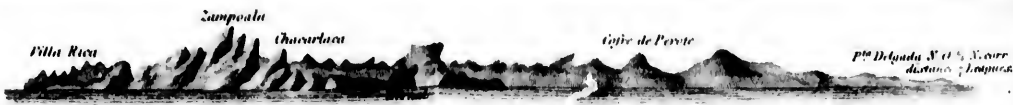
# PLAN of the PORT of VERACRUZ.

Villa Rica



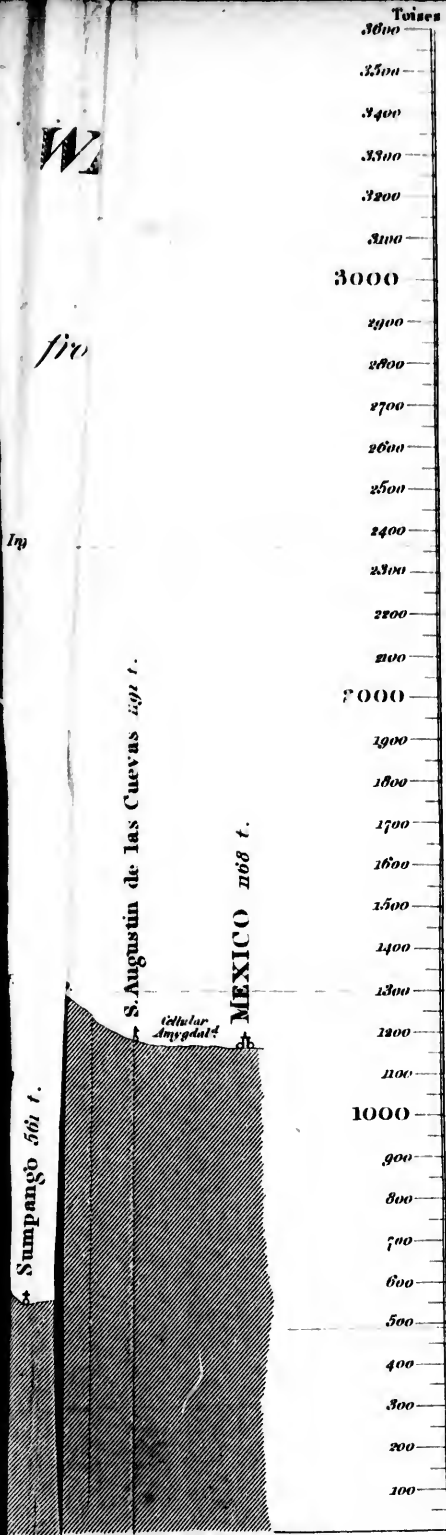
Vera Cruz (the most northern part of the City) lies in 19° 11.32" North Lat. and 97° 33.36" of West Longt. from the 1<sup>st</sup> Merid. of Paris. — Mean Temperature 23.5; of the Centigrade Therm. (77.14. of Fahren.) — Annual Quantity of rain from 89 to 94 inches. The north Wind is announced by a great change in the baromet. During this Wind the Mercury rises 4 or 7 lines, while the ordinary variations or action of the lesser Atmospheric horary tides do not exceed from 1.25 to 1.6 lines. There is only one tide in the 24 hours at Vera Cruz, which is generally from 1 to 1½ feet, but from 2½ to 3 feet in the Solstices & Equinoxes. The figures indicate the N<sup>o</sup> of fathoms. (Humboldt.)





Scale of one Maritime Mile or 360 Toises  
 10 20 30 40





Toises

3600

3500

3400

3300

3200

3100

3000

2900

2800

2700

2600

2500

2400

2300

2200

2100

2000

1900

1800

1700

1600

1500

1400

1300

1200

1100

1000

900

800

700

600

500

400

300

200

100

Height of the Mount of S<sup>t</sup>. Elie (on the S.W. Coast of America in 10<sup>o</sup> 12' of Lat.) 2787 t. by Malmispin & 1980 t. by Lapérouse.

Height of the Pic d'Orizaba.

Height of Mount Blanc.

Inf. limit of Snow under the 19<sup>o</sup> 20' of N. Lat.

Height of l'Aiguille d'Argentine in Suwy.

Height of the (unigou (in the Pyrenees)

Inf. limit of perpet. Snow under the 45<sup>o</sup> of North Lat. in Europe.

Mean temperature 13<sup>o</sup> 6' F.

Height of the Pass of S<sup>t</sup>. Gothard.

Height of the Silver mines of Tasco & Tehuilotpec.

Height of Barre (in the Pyrenees)

Height of Tarvius.

Inf. limit of perpet. Snow under 65<sup>o</sup> N. Lat.

Height of the City of Caracas.

Lat. N. 10<sup>o</sup> 25' 45".  
 Lon. W. 101<sup>o</sup> 25' 30".

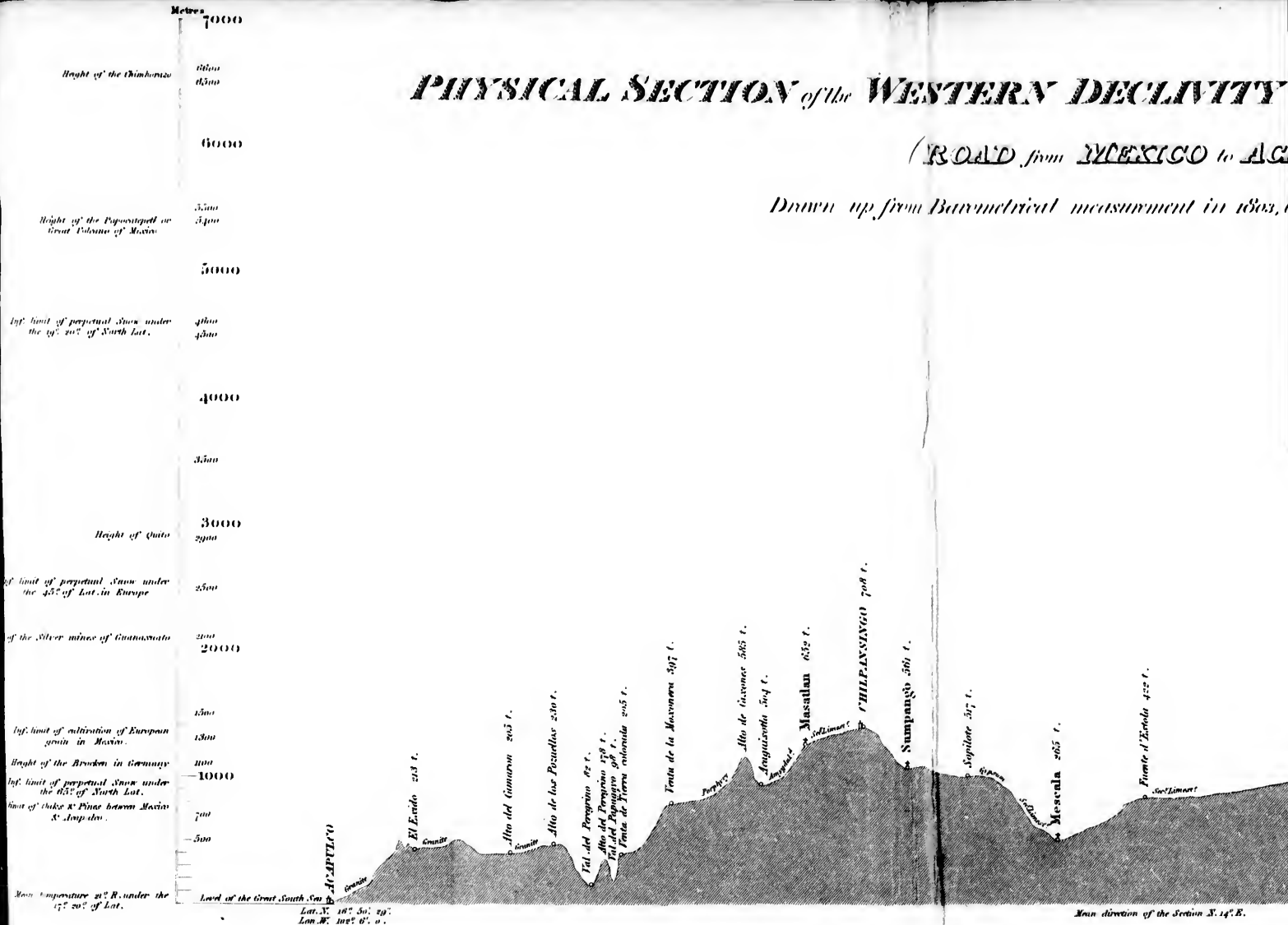
Engraved by W. Levery.



# PHYSICAL SECTION of the WESTERN DECLIVITY

(ROAD from MEXICO to ACADEMIA)

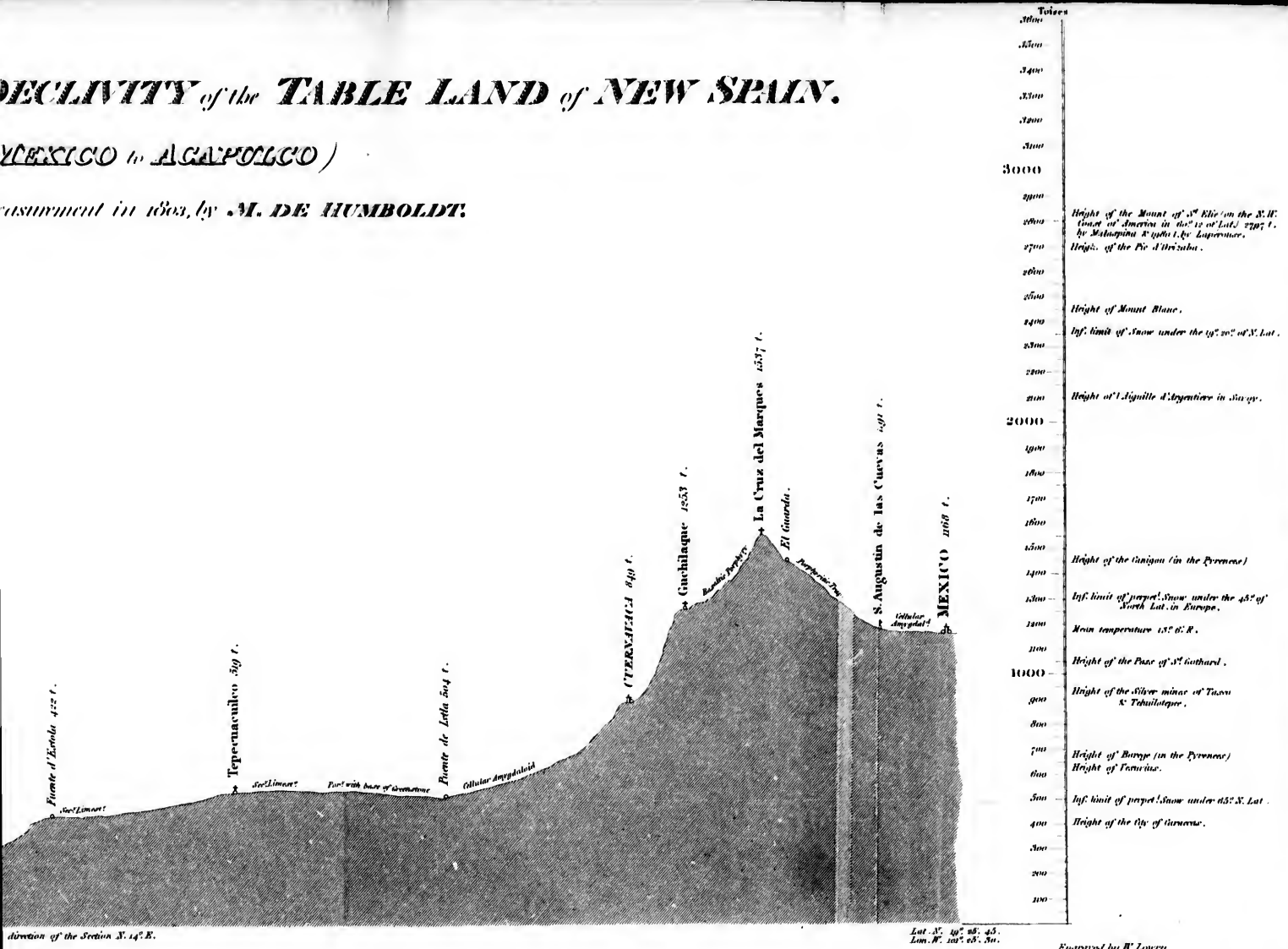
Drawn up from Barometrical measurement in 1803,



# DECLIVITY of the TABLE LAND of NEW SPAIN.

(MEXICO to AGAPOLCO)

Measurement in 1803, by M. DE HUMBOLDT.



Leagues of 50 to the Degree  
 1 2 3 4 5 6 7 8 9 10  
 Made by Longman & Co. in 1800.

Engraved by W. Leary.

110

Eight

ht

.m

.

7

con

1

1

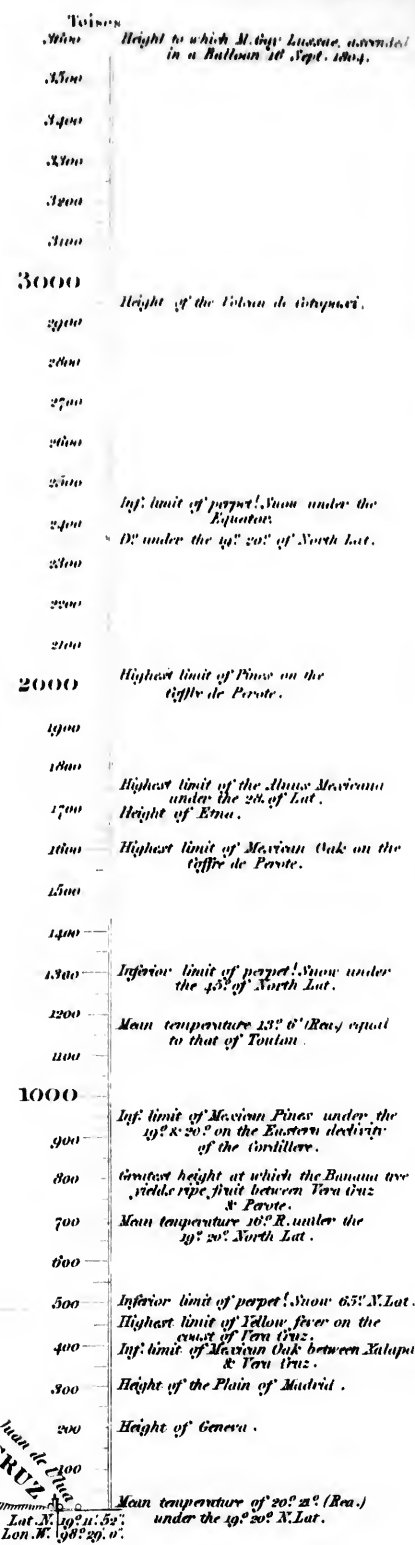
1

1

1

1

Height  
1  
//  
///  
Height  
the  
su  
h  
stone  
F



Gallinas

La Amargua

S. Juan de los Rios  
VERA CRUZ

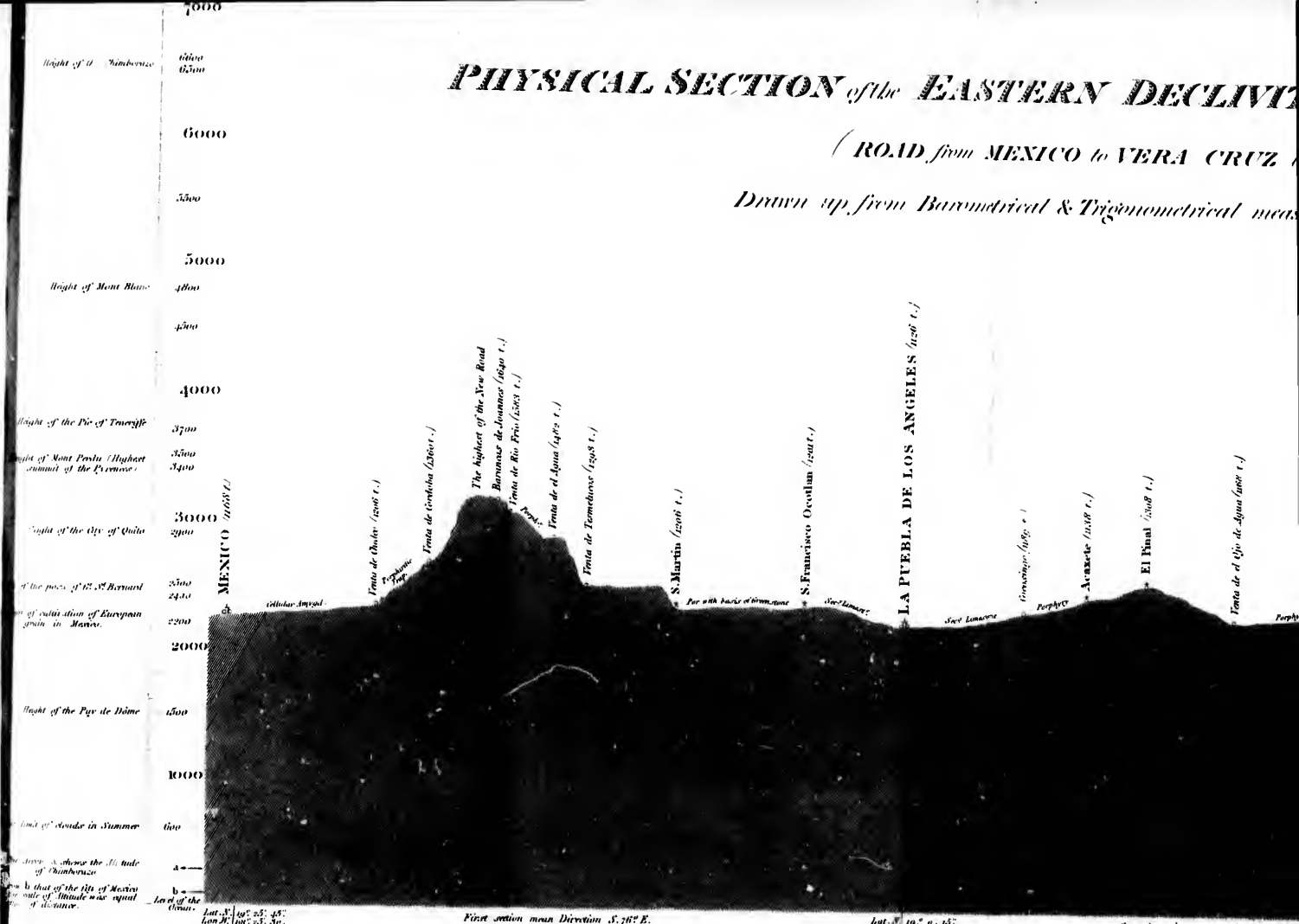
Lat. N. 19° 11' 52"  
Lon. W. 98° 29' 0"

Engraved by Wilson Lowry.

# PHYSICAL SECTION of the EASTERN DECLIVITY

(ROAD from MEXICO to VERA CRUZ)

Drawn up from Barometrical & Trigonometrical means



Height of *P. Teneriffe* 3700  
 Height of *Mont Pelee* 3500  
 Height of the *City of Quito* 2900  
 Height of the *Pys de Dôme* 1500  
 Level of the *Sea* 0

MEXICO (2600 f.)

LA PUEBLA DE LOS ANGELES (2200 f.)

First section mean Direction  $S. 76^{\circ} E.$

Lat.  $19^{\circ} 0'$   
 Lon.  $96^{\circ} 45'$

Second section mean Direction  $N. 52^{\circ} E.$

Scale of the Degree  
 Published by Longman & Co. for the Admiralty

# DECLIVITY of the TABLE LAND of NEW SPAIN.

from **VERA CRUZ** by **PUEBLA & XALAPA** )

trigonometrical measurement in 1804, by **M. DE HUMBOLDT.**



Toises	Remarks
3600	Height to which <i>M. big. Latrovi</i> ascended in a Balloon 16 Sept. 1804.
3500	
3400	
3300	
3200	
3100	
3000	Height of the Column of Cortinez.
2900	
2800	
2700	
2600	
2500	
2400	Inf. limit of perpetual Snow under the Equator.
2300	10' under the 19° 20' of North Lat.
2200	
2100	
2000	Highest limit of Pine on the Cofre de Perote.
1900	
1800	
1700	Highest limit of the <i>Abies Mexicanus</i> under the 20° of Lat.
1600	Height of <i>Abies</i> .
1500	Highest limit of Mexican Oak on the Cofre de Perote.
1400	
1300	
1200	Inferior limit of perpetual Snow under the 43° of North Lat.
1100	
1000	Mean temperature 13° R. (Rea) equal to that of Toulon.
900	
800	Inf. limit of Mexican Pine under the 19° 20' on the Eastern declivity of the Cordillera.
700	Mean temperature 16° R. under the 19° 20' North Lat.
600	
500	Inferior limit of perpetual Snow 63° 3' Lat.
400	Highest limit of <i>Abies</i> , free on the coast of Vera Cruz.
300	Inf. limit of Mexican Oak between Tehuacan & Vera Cruz.
200	Height of the Plain of Mexico.
100	Height of <i>Canari</i> .
0	Mean temperature of 20° 20' (Rea) under the 19° 20' N. Lat.

Second section main Direction N. 52° E.

Lat. N. 19° 30' 30"  
Lon. W. 99° 30' 0"

Third section main Direction S. 65° E.

Lat. N. 19° 20' 30"  
Lon. W. 99° 30' 0"

Marine Leagues of 20 to the Degree  
Published by Longman & Co. 11, St. Dun's St.

Engraved by Wilson Lowry.

Figure 1

He

ght of

limit

th

the Gr

er limit

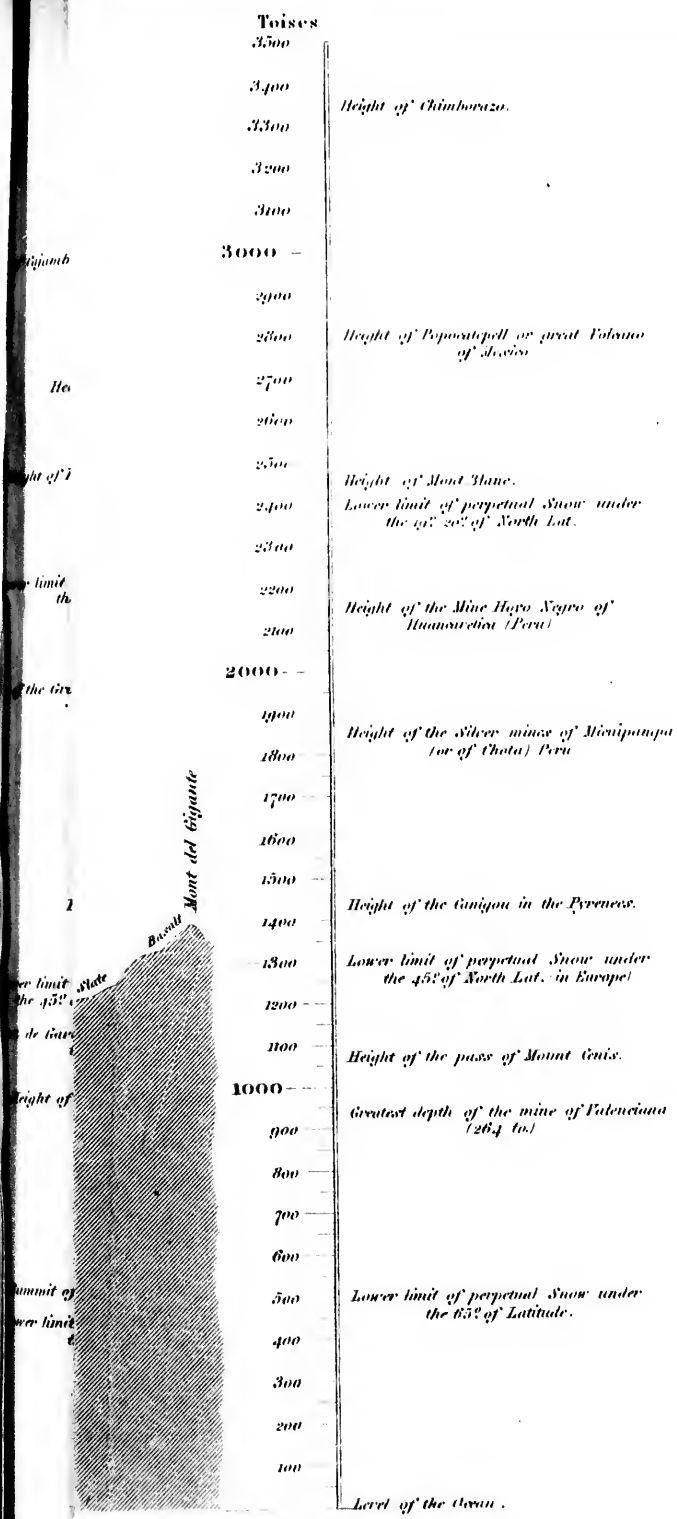
the 45

de Ge

eight

sum

wer t



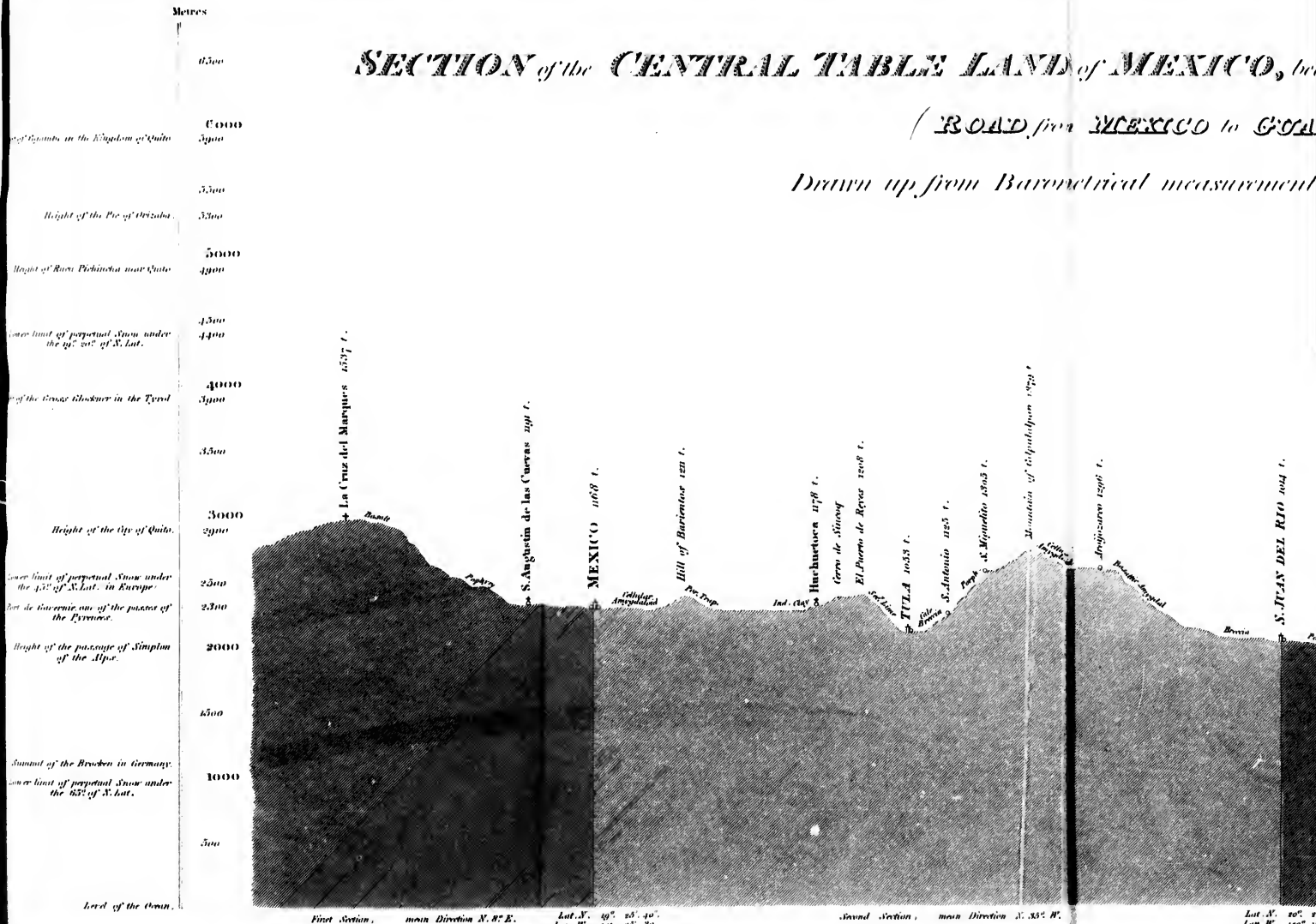
Engraved by Wilson Lowry.



# SECTION of the CENTRAL TABLE LAND of MEXICO, (

ROAD from MEXICO to GOA)

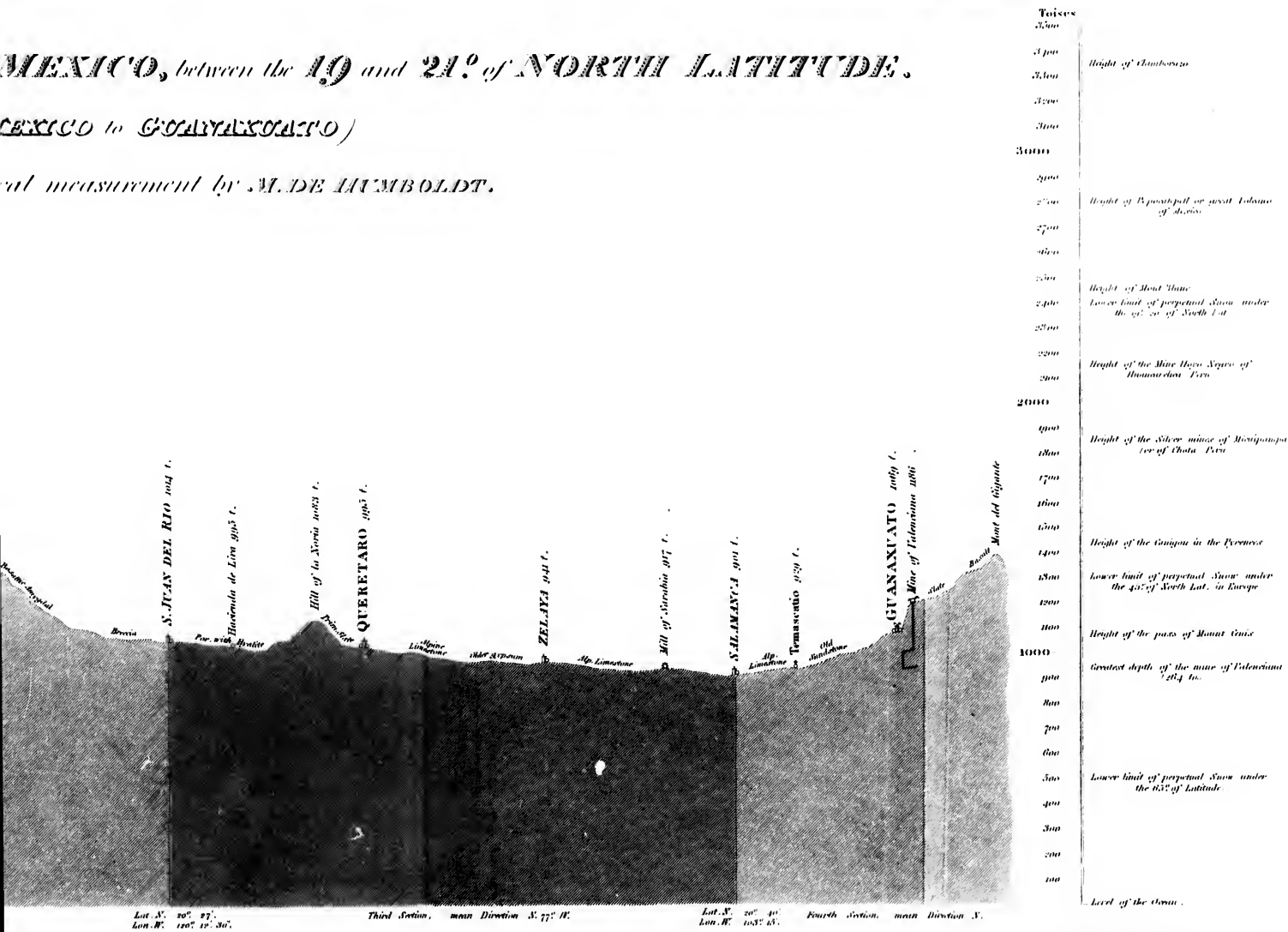
Drawn up from Barometrical measurement



MEXICO, between the 19° and 21° of NORTH LATITUDE.

(MEXICO to GUANAJUATO)

Actual measurement by M. DE HUMBOLDT.



Engraved by Wilson Lowry.

To the Degree  
0 1 2 3 4 5 6 7 8 9 10









**A MAP OF  
NEW SPAIN**

reduced from the Large Map drawn from  
astronomical observations at Mexico  
in the Year 1804.

BY **ALEXANDER DE HUMBOLDT,**  
and comprehending the whole of the information contained in the  
Original Map,  
except the heights of the Mountains.

114 Longitude West 110 From Greenwich 108 106 104 102 100 98 96 94 92 90 88 86 84 82 80

30 32 34 36 38 40 42 44 46 48 50 52 54 56 58 60 62 64 66 68 70 72 74 76 78 80 82 84 86 88 90 92 94 96 98 100 102 104 106 108 110 112 114

17 15 13 11 9 7 5 3 1

**LOUISIANA**  
Acquired by the Treaty of Paris  
1763

The Mountains  
are shaded in Red

Scale of Miles

Scale of Degrees

Scale of Feet

Scale of Paces

Scale of Stadia

Scale of Leagues

Scale of Miles

17 15 13 11 9 7 5 3 1

17 15 13 11 9 7 5 3 1

17 15 13 11 9 7 5 3 1

17 15 13 11 9 7 5 3 1

17 15 13 11 9 7 5 3 1

17 15 13 11 9 7 5 3 1

17 15 13 11 9 7 5 3 1

17 15 13 11 9 7 5 3 1

17 15 13 11 9 7 5 3 1

17 15 13 11 9 7 5 3 1

17 15 13 11 9 7 5 3 1

17 15 13 11 9 7 5 3 1

17 15 13 11 9 7 5 3 1

17 15 13 11 9 7 5 3 1

17 15 13 11 9 7 5 3 1

17 15 13 11 9 7 5 3 1

17 15 13 11 9 7 5 3 1

17 15 13 11 9 7 5 3 1

17 15 13 11 9 7 5 3 1

